

# Improving completion of the *Diabetes Annual Cycle of Care* at the Victorian Aboriginal Health service (VAHS)



# Community Controlled Health organisation



# Diabetes Clinic



Development of objectives strategies and actions

## Diabetes Clinic

Break down work load into manageable time frames

Proposal and Business case with evidence to support objective and solutions

Involve a broad group of staff to support

# A brief policy history post colonisation

- War
- Protectionism – Assimilation
- Land
- 60's activism- census!
- 70's self determination
- 3 seminal reports: Aboriginal deaths in custody 87, Stolen generation 97, Little Children are sacred report 2007
- Northern Territory Intervention
- The apology



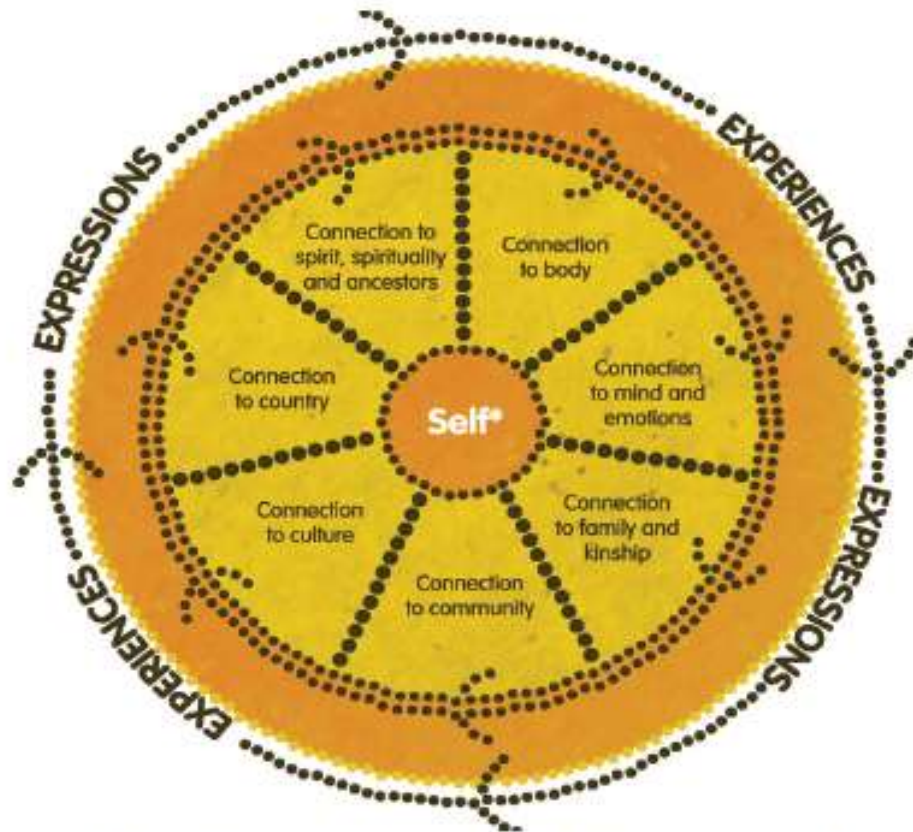
Image 14: Gough Whitlam gave the Gurindji people their victory. NLA collection



IMAGE 18: Early Aboriginal Tent embassy, Canberra, 1972



**Figure 4.1:** Social and Emotional Wellbeing from an Aboriginal and Torres Strait Islanders' Perspective



\*This conception of self is grounded within a collectivist perspective that views the self as inseparable from, and embedded within, family and community.

© Gee, Dudgeon, Schultz, Hart and Kelly, 2013

Artist: Tristan Schultz, RelativeCreative.

Cam!





# Aboriginal staff



# Patient Journey Tool



## Diabetes Clinic Passport

Name \_\_\_\_\_

Date \_\_\_\_\_

### Overall Health Checks

- Health Assessment
- Care Plan
- HACC Assessment
- Bloods/Urine

### Diabetes Educator

- Diabetes Self-Management Education
- Medications review with GP

Follow up required \_\_\_\_\_

### Optometrist – Eye Health

- Eye Check
- Retinal exam

Follow up required \_\_\_\_\_

### Doctor

- Medications review
- Results review
- Other

Follow up required \_\_\_\_\_

### Podiatrist – Foot Health

- Foot check
- Sensation check (monofilament)

Follow up required \_\_\_\_\_

### Dietitian – Food and Nutrition

- Food review
- Recommendations

Follow up required \_\_\_\_\_

Referrals Made

\_\_\_\_\_





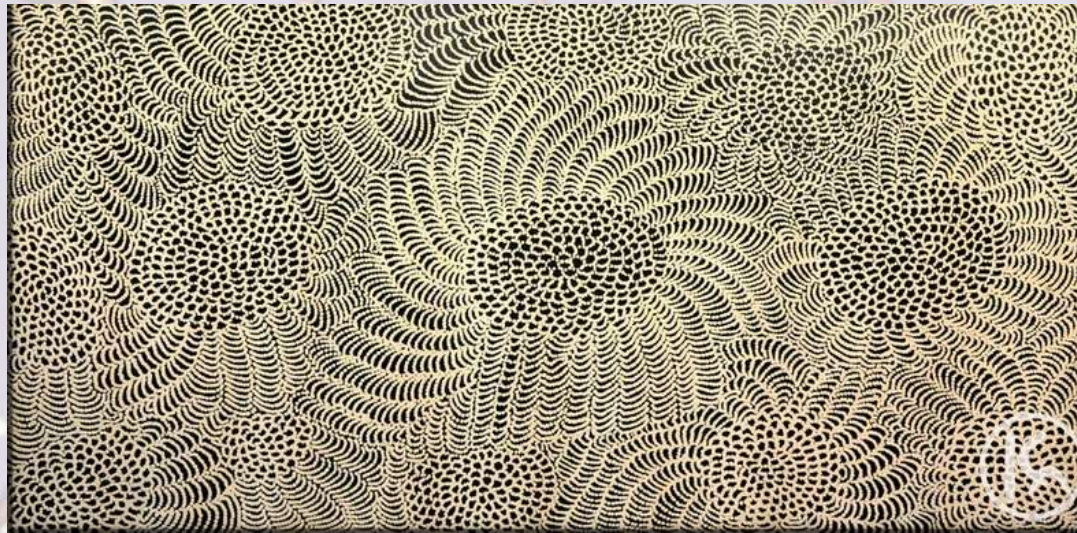
# Kleinman: the explanatory models approach



7 clinics 36 patients so far this year

# Accessible services

- Theoretical frame work: Holding (kanyini), candidacy



Peiris,D (2012) Building better systems of care for Aboriginal and Torres Strait Islander people: findings from the Kanyini health systems assessment  
*BMC Health Services Research*, 12:369

<http://www.biomedcentral.com/1472-6963/12/369> Last accessed 15th Nov 2013

Permission from artist has been gained for above work Jean Napajimpa Hudson



# Follow-up Systems

## Appointments

Name \_\_\_\_\_

GP \_\_\_\_\_

Date



- Aboriginal Health Worker
- GP
- Aboriginal Health Assessment
- Care Plan
- Diabetes Clinic review

- Pharmacotherapy scripts
- Diabetes Educator
- Dietitian
- Podiatrist
- Optometrist
- Physiotherapist
- Audiologist

- Cardiologist
- Dermatologist
- Geriatrician
- General Surgeon/MrKeck
- Ophthalmologist

### **When**

Days: 1	2	3	4	5
Weeks: 1	2	3	4	5
Months: 1	2	3	4	5

30mins      1hour

Transport (form completed)

Yes      No





Thank you

