

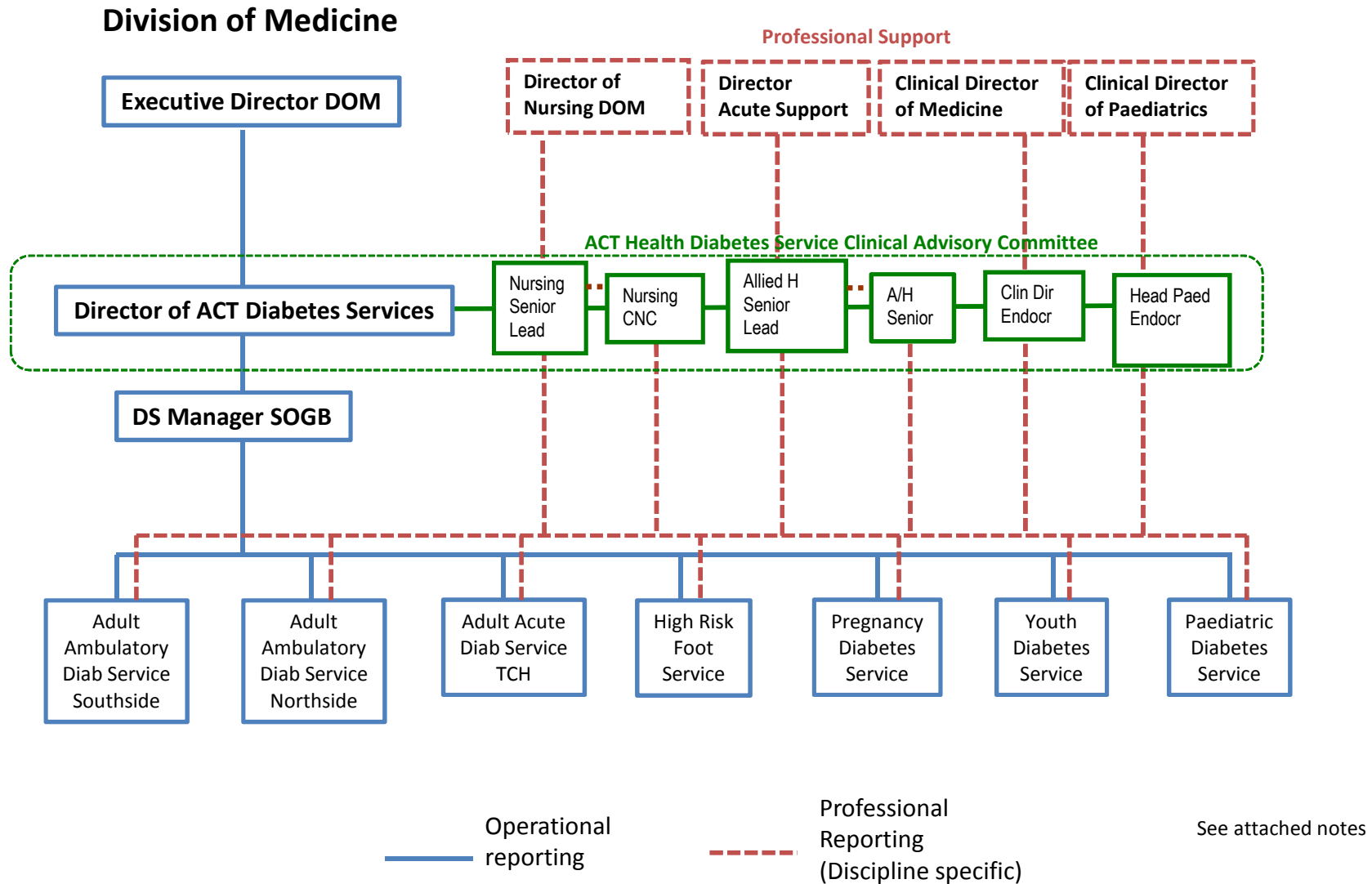


ACT Health Diabetes Service

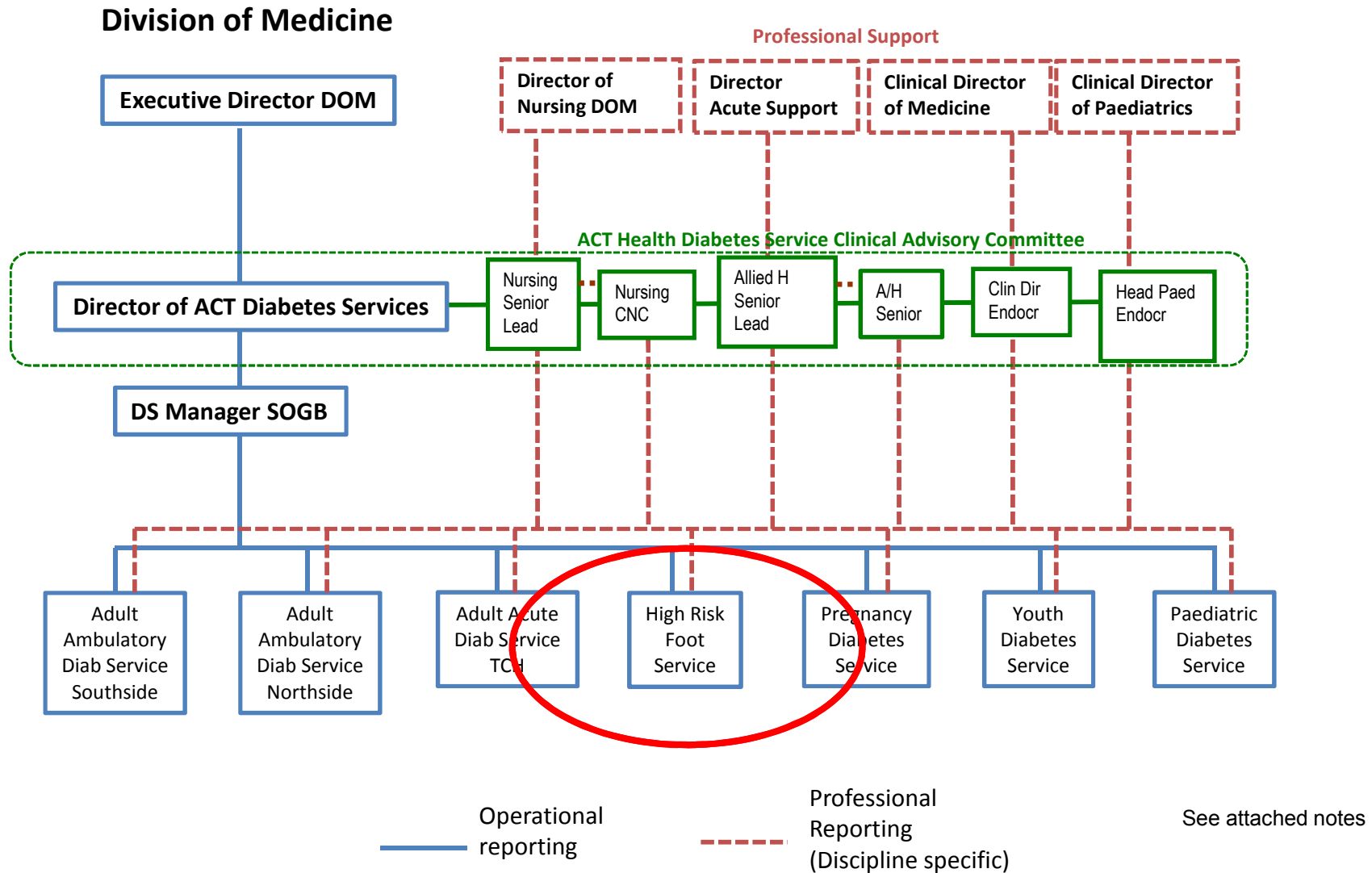
Establishment of a

High Risk Foot Collaborative

ACT Health Diabetes Service Organisational Chart



ACT Health Diabetes Service Organisational Chart



Win 1

2nd podiatry room and chair at The
Canberra Hospital
Aug 2012

The new Risky Foot Clinic will help patients avoid more serio...

<http://www.abc.net.au/news/2012-08-16/new-podiatry-clinic-a>

NEWS



The new Risky Foot Clinic will help patients avoid more serious conditions.

Updated Thu 16 Aug 2012, 7:54pm

The new Risky Foot Clinic will help patients avoid more serious conditions.

ABC News

TCH podiatry: Still standing on two feet?

- Summary of 2012
 - Staff resources shifted from community clinics to focus on patients at greatest need-inpatient and outpatient high risk podiatry services at TCH.
 - 2nd outpatient podiatry room at TCH

Win 2

Establishment of a
High Risk Foot Collaborative
2013

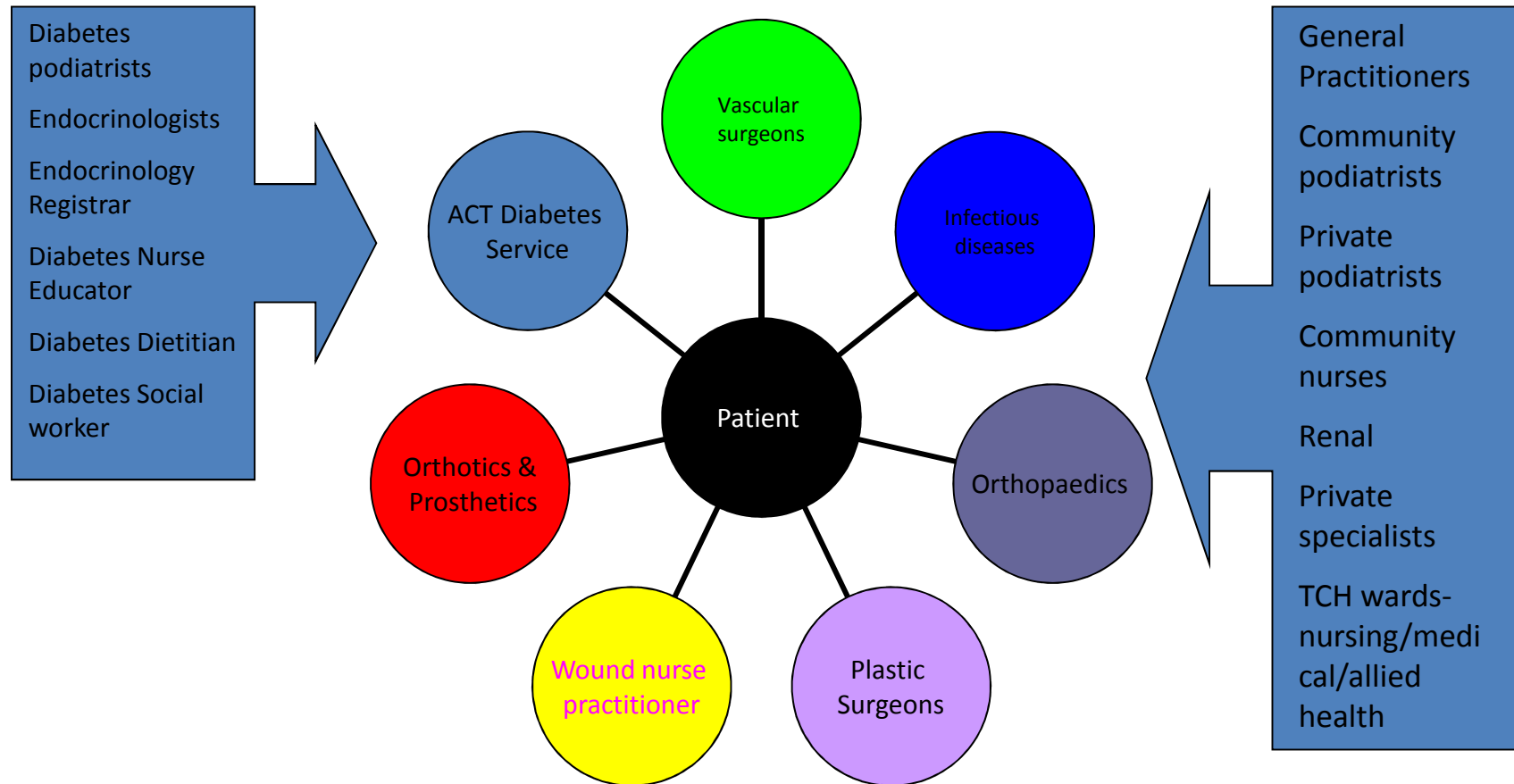
Medical student project

Justin Friedman

- Patients admitted to TCH with serious diabetic foot complications were:
 - Admitted to any one of 13 different medical or surgical wards
 - For each admission on average there was only one interdisciplinary referrals

Planning breakfast meeting
November 2013

Disciplines needed on board the TOE truck



High Risk Foot Collaborative Meeting Commenced 2013

- Team meets every Thursday morning 8 am
- Staff/ students- more than 20 attend weekly
- Starts in radiology meeting room
- Patients discussed- including photos of feet, radiology
- Smaller team- go to see patients in podiatry rooms and patients are discussed
- Management decided upon



Thank you